

[View PDF](#)

Underglaze

Printing in a single color on earthenware and stoneware 1780-1820

[Add to My Gallery](#) | [Create an Album](#)



**Additional Image:**



[enlarge](#) [\[+\]](#)

Tureen stand.



[enlarge \[+\]](#)

Ladle.

Shape Type

Dinner & Dessert Wares

Pattern Type

Chinese, Asian and Other Exotic Themes

Date

1809-1833

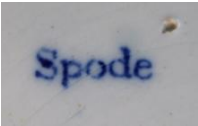
Dimensions

- Length: 8.00 in (20.32 cm)

Maker

Spode

**Maker's Mark:**



Printed

[enlarge \[+\]](#)

**Description:**

An earthenware sauce tureen, cover, stand and ladle from Spode's Indian Sporting series . The body is printed with the Dead Hog pattern and the stand is printed with the composite view.

[BACK TO CATALOG INDEX](#)



Printing in a single color on earthenware and stoneware 1780-1820

[View All](#)



Chinese, Asian and Other Exotic Themes

[View All](#)



Indian Sporting - Spode

[View All](#)



Examples by Maker

[View All](#)



Print Type Indexd

[View All](#)