

[View PDF](#)

[Underglaze](#)

Printing in multiple colors

[Add to My Gallery](#) | [Create an Album](#)



Additional Image:



[enlarge](#) [\[+\]](#)

Seen here is a view of the other side of the jug.



[enlarge](#) [+]

Shown here is a close up of the three border designs consisting of geometric motifs with Chinese symbols. The combination of underglaze printing in both blue on white and yellow on a brown ground as found on this cream jug is considered rare.

Shape Type

Breakfast & Tea Wares

Pattern Type

Chinese, Asian and Other Exotic Themes

Date

1800-1810

Dimensions

- Height: 4.25 in (10.80 cm)

Maker

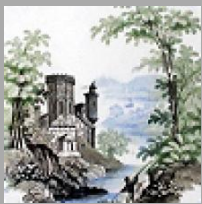
Walter Daniel

Description:

A rare pearlware cream jug printed in blue in the Parasol Willow pattern with two different borders printed in yellow on a brown ground and blue painted bands that frame the borders. While the border on the interior and exterior of the neck are the same as used on the Daniel version of Parasol Willow, also included in this exhibit, the third border printed

[expand](#) [+]

[BACK TO CATALOG INDEX](#)



Printing in multiple colors

[View All](#)



Chinese, Asian and Other Exotic Themes

[View All](#)



Examples by Maker

[View All](#)



Print Type Indexd

[View All](#)