

[View PDF](#)

Overglaze

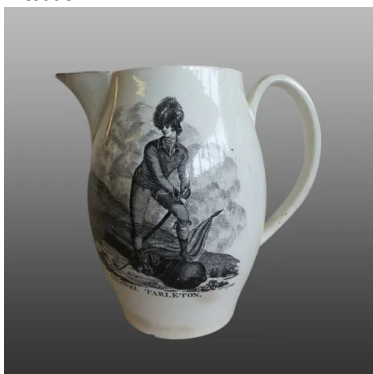
Printing on Earthenware and Stoneware 1750-1800

[Add to My Gallery](#) | [Create an Album](#)



National Museums Liverpool 52.60.B

**Pattern**



[enlarge](#) [+]

## Source



[enlarge](#) [\[+\]](#)

## Source Description:

Colonel Banastre Tarleton, engraved by John Raphael Smith in 1782 after Sir Joshua Reynolds' painting exhibited at the Royal Academy in the same year. The painting is now in the National Gallery, London. The image glamourises Tarleton as a dashing young officer, poised and readying himself for action against the American revolutionaries.

## Additional Image:



[enlarge](#) [\[+\]](#)

The other side shows the personification of Hope, symbolised by her anchor, sitting next to some packages, with a ship setting out behind her. A subject calculated to appeal to a local market of Liverpool merchants. The jug encouraged them to pour beer from it to drink not only to success in their export trade but also to their local 'hero' Tarleton.

Shape Type

Miscellaneous

Pattern Type

Commemorative, Heraldic and Historical Events

Date

1789-98

Dimensions

- Height: 20.20 in (51.31 cm)
- Length: 21.40 in (54.36 cm)
- Width: 14.50 in (36.83 cm)

Maker

Ralph Wedgwood

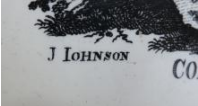
Printer's Name  
Joseph Johnson

**Maker's Mark:**



Impressed  
[enlarge](#) [+]

**Printer's Mark:**



Printed  
[enlarge](#) [+]

**Description:**

Creamware jug with loop handle, printed in black. One side shows Lieutenant-Colonel Banastre Tarleton (1754-1833). In the American Revolution he led a Loyalist cavalry unit known as Tarleton's Raiders. Rebel propaganda claimed that he fired on surrendering troops at the Battle of Waxhaws. He became one side's villain and the other side's hero. A member of a leading Liverpool family of merchants engaged in  
[expand](#) [+]

[BACK TO CATALOG INDEX](#)



Printing on Earthenware and Stoneware 1750-1800

[View All](#)



Commemorative, Heraldic and Historical Events

[View All](#)



Examples by Maker

[View All](#)



Examples by Printer

[\*View All\*](#)



Print Type Indexd

[\*View All\*](#)