

[View PDF](#)

Underglaze

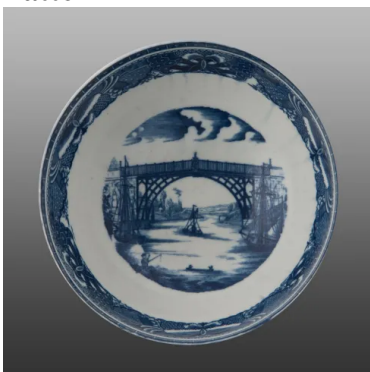
Printing on porcelain 1750-1800

[Add to My Gallery](#) | [Create an Album](#)



Courtesy of the Ironbridge Gorge Museums Trust

**Pattern**



[enlarge](#) [+]

## Source



[enlarge](#) [+]

## Source Description:

The probable source is this engraving by William Ellis after a watercolor by Michael Angelo Rooker. The group of industrial buildings with a tall chimney, seen through the arch of the bridge, is common to both. In mid-stream, the engraver of the pottery print has added a Severn trow, a

[expand](#) [+]

Shape Type

Miscellaneous

Date

1781-1799

Dimensions

- Diameter: 18.70 in (47.50 cm)
- Height: 8.80 in (22.35 cm)

Maker

Caughley

## Description:

This bowl is printed with Iron Bridge 1. It depicts the first arch bridge in the world to be made of cast iron. It opened in 1781 and crosses the River Severn two miles from the site of the Caughley factory. The print is found on bowls, cabbage leaf jugs, mugs and a loving cup. The pattern was continued at the Coalport factory. There is a very rare pattern

[expand](#) [+]

[BACK TO CATALOG INDEX](#)



Printing on porcelain 1750-1800

[View All](#)



Examples by Maker

[View All](#)



Print Type Indexd

[View All](#)