

[View PDF](#)

Underglaze

Printing in a single color on earthenware and stoneware 1850-1900

[Add to My Gallery](#) | [Create an Album](#)



Additional Image:



[enlarge](#) [+]

Interior view of matching wash bowl measuring 15 inches in diameter and 5 inches high. The border pattern is also repeated around the exterior surface of the bowl. This bowl has an identical impressed Copeland mark and

date code.

Shape Type

Toilet & Personal Hygiene

Pattern Type

Plants

Date

1879

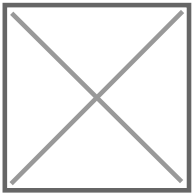
Dimensions

- Diameter: 7.25 in (18.42 cm)
- Height: 11.25 in (28.58 cm)

Maker

Copeland

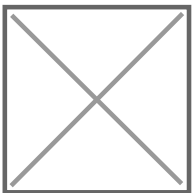
Maker's Mark:



Impressed

[enlarge](#) [\[+\]](#)

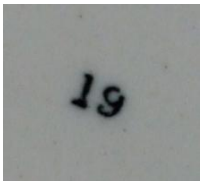
Maker's Mark:



Impressed

[enlarge](#) [\[+\]](#)

Worker's Mark:



Printed

[enlarge](#) [\[+\]](#)

Description:

A wash jug made of Copeland's B Body, a cream colored earthenware, printed underglaze in black with a pattern of water lilies called Nymphaea. Additional border pattern around exterior and interior of top rim and along the handle. Impressed mark COPELAND over letter B and date code mark U over 79 giving a manufacturing date of June 1879.

[BACK TO CATALOG INDEX](#)



Printing in a single color on earthenware and stoneware 1850-1900

[View All](#)



Plants

[View All](#)



Examples by Maker

[View All](#)



Print Type Indexd

[View All](#)