

[View PDF](#)

Underglaze

Printing in a single color on earthenware and stoneware 1850-1900, printed and painted

[Add to My Gallery](#) | [Create an Album](#)



Shape Type

Dinner & Dessert Wares

Pattern Type

Chinese, Asian and Other Exotic Themes

Date

1882-1894

Dimensions

- Diameter: 10.00 in (25.40 cm)

Maker

W. T. Copeland

**Maker's Mark:**



Printed

[enlarge](#) [\[+\]](#)

**Description:**

This molded earthenware plate or tray was printed in brown with one design from a series of Egyptian views that Copeland named Cairo. A border pattern named Arabesque was printed over a warm beige ground. A blue wash was added to selected elements of the center design. Portions of red enameling can still be seen on the rim. The pattern is Copeland's no. 2/1796. The item's Aesthetic

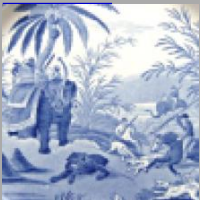
[expand](#) [\[+\]](#)

[BACK TO CATALOG INDEX](#)



Printing in a single color on earthenware and stoneware 1850-1900

[View All](#)



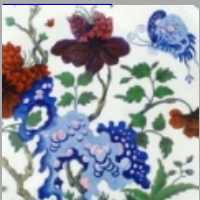
Chinese, Asian and Other Exotic Themes

[View All](#)



Examples by Maker

[View All](#)



Printed & Painted

[View All](#)



Print Type Indexd

[View All](#)