

[View PDF](#)

Underglaze

Printing in a single color on earthenware and stoneware 1820-1850

[Add to My Gallery](#) | [Create an Album](#)



**Additional Image:**



[enlarge \[+\]](#)

Additional view providing a closeup view of the pattern.



[enlarge \[+\]](#)

Additional view showing more of the pattern, the inner border and the large handles.

Shape Type

Miscellaneous

Pattern Type

Landscapes and Waterscapes

Date

1820-1833

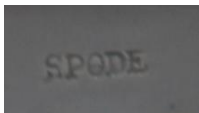
Dimensions

- Length: 16.75 in (42.55 cm)

Maker

Spode

**Maker's Mark:**



Impressed

[enlarge \[+\]](#)

**Description:**

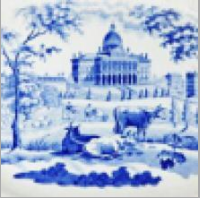
An earthenware molded oyster pan printed in blue in the Italian pattern. It has faux molded cooping to the sides that mimic wooden boards and coopered ribs. The pattern was based on a Claude Lorraine pastoral landscape of 1638. The border is copied directly from a Chinese export porcelain design. Only a few examples of this shape are known.

[BACK TO CATALOG INDEX](#)



Printing in a single color on earthenware and stoneware 1820-1850

[View All](#)



Landscapes and Waterscapes

[View All](#)



Examples by Maker

[View All](#)



Print Type Indexd

[View All](#)