

[View PDF](#)

Underglaze

Printing in a single color on earthenware and stoneware 1780-1820

[Add to My Gallery](#) | [Create an Album](#)



Additional Image:



[enlarge](#) [\[+\]](#)

A view of the components.

Shape Type

Miscellaneous

Pattern Type

Plants

Date

1811 - 1820

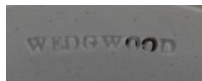
Dimensions

- Height: 12.00 in (30.48 cm)
- Width: 6.50 in (16.51 cm)

Maker

Wedgwood

Maker's Mark:



Impressed

[enlarge](#) [\[+\]](#)

Description:

A potpourri pot printed in blue in the Water Lily pattern also known as Lotus or Waterlily . The Water Lily pattern was originally engraved in 1808 for printing in brown with enameled decoration. It was first made with the "botanical" border. However, the pattern was expensive and difficult to make. In 1811, Josiah II gave instructions that it should be removed from display,
expand [\[+\]](#)

[BACK TO CATALOG INDEX](#)



Printing in a single color on earthenware and stoneware 1780-1820

[View All](#)



Plants

[View All](#)



Examples by Maker

[View All](#)



Print Type Indexd

[View All](#)