

[View PDF](#)

Underglaze

Printing in a single color on earthenware and stoneware 1820-1850

[Add to My Gallery](#) | [Create an Album](#)



Pattern



[enlarge \[+\]](#)

Source



[enlarge \[+\]](#)

Source Description:

Ponte Salaro taken from Views of Rome and its Vicinity published by Merigot and Edward, 1796-98.

Additional Image:



[enlarge \[+\]](#)

Shown here is an additional view.

Shape Type

Miscellaneous

Pattern Type

Landscapes and Waterscapes

Date

1820-1830

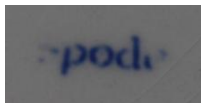
Dimensions

- Length: 18.75 in (47.63 cm)

Maker

Spode

Maker's Mark:



Printed

[enlarge \[+\]](#)

Description:

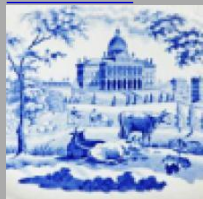
An earthenware skimming bowl printed with the Tower pattern. This bowl was used in the production of milk and would allow the user to separate the milk from the cream which floated to the top. The pattern was adopted from an original source print shown below.

[BACK TO CATALOG INDEX](#)



Printing in a single color on earthenware and stoneware 1820-1850

[View All](#)



Landscapes and Waterscapes

[View All](#)



Examples by Maker

[View All](#)



Print Type Indexd

[View All](#)