

[View PDF](#)

Underglaze

Printing in a single color on earthenware and stoneware 1820-1850

[Add to My Gallery](#) | [Create an Album](#)



Pattern



[enlarge](#) [+]

Source

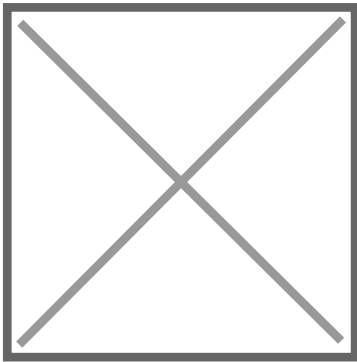


[enlarge](#) [+]

Source Description:

Bedfords, Essex. Source print taken from John Preston Neale in his Views of the Seats of Noblemen and Gentlemen in England and Wales, Scotland and Ireland.

Additional Image:



[enlarge](#) [+]

Shown here is the dish with cover.

Shape Type

Dinner & Dessert Wares

Pattern Type

Landscapes and Waterscapes

Date

1820-1846

Dimensions

- Diameter: 9.75 in (24.77 cm)
- Height: 2.50 in (6.35 cm)

Maker

Enoch Wood & Sons

Maker's Mark:



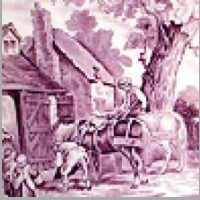
Printed

[enlarge](#) [+]

Description:

An earthenware square vegetable dish printed in blue with the named view Bedfords, Essex. Four other scenes on the sides include; Seaton Lodge, Northumberland; Rivenhall Place, Essex; Brecknock Castle, Brecknockshire; Dover Castle, Kent. The lid has the same scene as on the interior of the dish. Printed title mark. The source print for this pattern is from John Preston Neale's Views of the Seats
expand [+]

[BACK TO CATALOG INDEX](#)



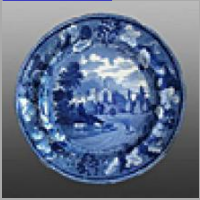
Printing in a single color on earthenware and stoneware 1820-1850

[View All](#)



Landscapes and Waterscapes

[View All](#)



Grapevine Border - Enoch Wood & Sons

[View All](#)



Examples by Maker

[View All](#)



Print Type Indexd

[View All](#)