

[View PDF](#)

Underglaze

Printing in a single color on earthenware and stoneware 1780-1820, printed and painted

[Add to My Gallery](#) | [Create an Album](#)



Additional Image:



[enlarge](#) [\[+\]](#)

Another view of the jug.

Shape Type

Miscellaneous

Pattern Type

Chinese, Asian and Other Exotic Themes

Date

1800-1810

Dimensions

- Height: 7.50 in (19.05 cm)

Maker

Unknown

Description:

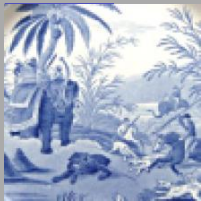
A pearlware puzzle jug printed in blue with the Two Temples II, variation Broseley, Reversed pattern and floral border pattern on collar. A blue ground has been added to the beak and circular band of tubular spouts designed as drinking spouts. A decorative pierced design has been added to the neck of the jug. The globular center shape has a pedestal base. Coysh and Henrywood
expand [+]

[BACK TO CATALOG INDEX](#)



Printing in a single color on earthenware and stoneware 1780-1820

[View All](#)



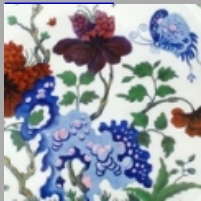
Chinese, Asian and Other Exotic Themes

[View All](#)



Examples by Maker

[View All](#)



Printed & Painted

[View All](#)



Print Type Indexd

[View All](#)