

[View PDF](#)

Overglaze

Printing on Porcelain 1800-1900

[Add to My Gallery](#) | [Create an Album](#)



Additional Image:



[enlarge](#) [+]

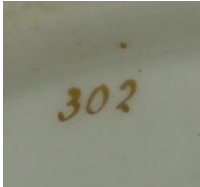
This is an example of a plate from a similar Minton dessert service. It is not gilded or pierced and is but printed in charcoal grey with identical prints. It would have a different pattern number but is unmarked.

Shape Type
Dinner & Dessert Wares
Pattern Type
Plants
Date
1822 - 1825
Dimensions

- Height: 1.75 in (4.45 cm)
- Length: 10.50 in (26.67 cm)
- Width: 7.75 in (19.69 cm)

Maker
Minton

Maker's Mark:



Painted
[enlarge \[+\]](#)

Description:

A porcelain oval dessert dish in pattern number 302. The dish has a dropped shell molded pierced rim. It is decorated with a central flower print and four smaller flower prints around the rim, along with additional gilding. The base is marked with '302' handpainted in gold.

[BACK TO CATALOG INDEX](#)



Printing on Porcelain 1800-1900

[View All](#)



Plants

[View All](#)



Examples by Maker

[View All](#)



Print Type Indexd

[View All](#)