

[View PDF](#)

Overglaze

Printing on Porcelain 1800-1900

[Add to My Gallery](#) | [Create an Album](#)



**Additional Image:**



[enlarge](#) [\[+\]](#)

Alternative view of teapot

Shape Type

Breakfast & Tea Wares

Pattern Type

Plants

Date

1810 - 1820

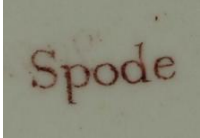
Dimensions

- Diameter: 3.50 in (8.89 cm)
- Height: 3.50 in (8.89 cm)

Maker

Spode

**Maker's Mark:**



Printed

[enlarge](#) [\[+\]](#)

**Description:**

A small porcelain round sweep neck teapot and cover, in pattern number 2436, printed in brown over a gold panel with print number P.525 Convolvulus border from the Pluck and Dust Printed Series. Additional gilded decoration. Printed mark Spode in brown on base of teapot. Print reference Drakard, David and Holdway, Paul. Spode Transfer Printed Ware, 1784-1833. Woodbridge, Suffolk, Antique Collector's Club, Inc., 2002.

[BACK TO CATALOG INDEX](#)



Printing on Porcelain 1800-1900

[View All](#)



Plants

[View All](#)



Examples by Maker

[View All](#)



Print Type Indexd

[View All](#)