

[View PDF](#)

Underglaze

Printing in a single color on earthenware and stoneware 1820-1850

[Add to My Gallery](#) | [Create an Album](#)



**Pattern**



[enlarge](#) [+]

## Source



[enlarge](#) [\[+\]](#)

### Source Description:

Harewood House, Yorkshire, from John Preston Neale's *Views of the Seats of Noblemen and Gentlemen in England and Wales, Scotland and Ireland*.

Shape Type

Dinner & Dessert Wares

Pattern Type

Landscapes and Waterscapes

Date

1820-1846

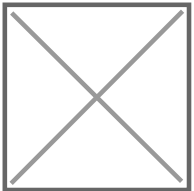
Dimensions

- Height: 1.50 in (3.81 cm)
- Length: 14.50 in (36.83 cm)
- Width: 11.00 in (27.94 cm)

Maker

Enoch Wood & Sons

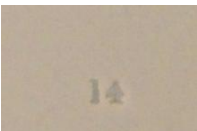
### Maker's Mark:



Printed

[enlarge](#) [\[+\]](#)

### Maker's Mark:



Impressed

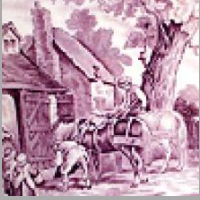
[enlarge](#) [\[+\]](#)

**Description:**

An earthenware platter printed in blue with the named view Harewood House, Yorkshire. This scene was also printed on a 9 inch square bowl, a 15 inch platter, and a 12 inch water basin. Printed title mark. The source print for this pattern is from John Preston Neale's Views of the Seats of Noblemen and Gentlemen in England and Wales, Scotland and Ireland (shown

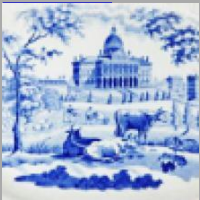
*expand* [+]

**BACK TO CATALOG INDEX**



Printing in a single color on earthenware and stoneware 1820-1850

[View All](#)



Landscapes and Waterscapes

[View All](#)



Grapevine Border - Enoch Wood & Sons

[View All](#)



Examples by Maker

[View All](#)



Print Type Indexd

[View All](#)