

[View PDF](#)

Underglaze

Printing in a single color on earthenware and stoneware 1820-1850, printed and painted

[Add to My Gallery](#) | [Create an Album](#)



Additional Image:



[enlarge](#) [+]

Seen here is a panoramic view of the complete pattern.



[enlarge \[+\]](#)

A view of the reverse side of the mug.

Shape Type

Miscellaneous

Pattern Type

Animals

Date

1822-1826

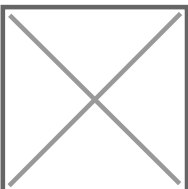
Dimensions

- Diameter: 4.00 in (10.16 cm)
- Height: 3.63 in (9.22 cm)

Maker

Lockett & Hulme

Maker's Mark:



Printed

[enlarge \[+\]](#)

Description:

A cylindrical shaped mug printed in blue with blue ground filled-in and enameling overglaze. While similar to the Elephant and Camel pattern produced by Baggerley & Ball, it varies in details and quality. The rider on the elephant is much more predominant in this pattern. "No. 18" in the mark refers to the pattern number. See below for a panoramic view of the design.

[expand \[+\]](#)

[BACK TO CATALOG INDEX](#)



Printing in a single color on earthenware and stoneware 1820-1850

[View All](#)



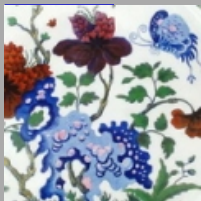
Animals

[View All](#)



Examples by Maker

[View All](#)



Printed & Painted

[View All](#)



Print Type Indexd

[View All](#)