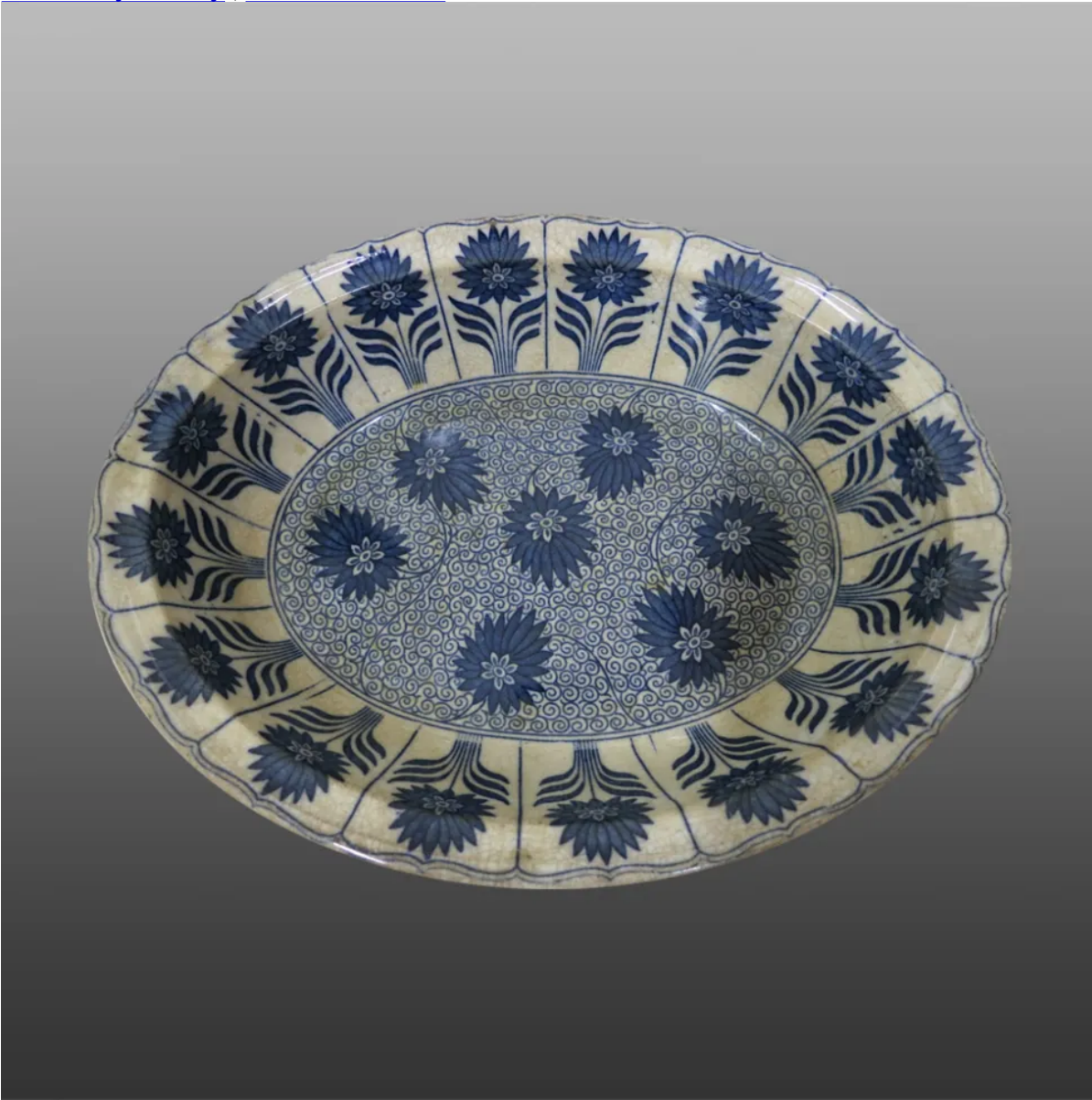


[View PDF](#)

[Underglaze](#)

Printing in a single color on earthenware and stoneware 1850-1900

[Add to My Gallery](#) | [Create an Album](#)



Nottingham Castle Museum and Art Gallery 1962.381

Shape Type

Dinner & Dessert Wares

Pattern Type

Plants

Date

1880

Dimensions

- Height: 6.00 in (15.24 cm)
- Length: 30.00 in (76.20 cm)
- Width: 23.00 in (58.42 cm)

Maker

## Minton

### Description:

Minton dish printed in the China Aster pattern. It bears the Minton date code for June 1880. An example of Reformed Design in its reaction against Victorian Naturalism in favor of stylized and formal patterning. As such it follows the principles of the Gothic Revival architects/designers and of the Aesthetic Movement designers who succeeded them.

[BACK TO CATALOG INDEX](#)



Printing in a single color on earthenware and stoneware 1850-1900

[View All](#)



Plants

[View All](#)



Examples by Maker

[View All](#)



Print Type Indexd

[View All](#)