

[View PDF](#)

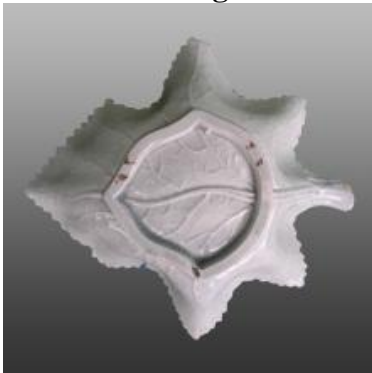
Underglaze

Printing in a single color on earthenware and stoneware 1780-1820

[Add to My Gallery](#) | [Create an Album](#)



Additional Image:



[enlarge](#) [\[+\]](#)

Additional view showing the underside of this molded piece.



[enlarge](#) [\[+\]](#)

Additional view showing detail of the molded leaf veins.

Shape Type

Dinner & Dessert Wares

Pattern Type

Animals

Date

1810-1815

Dimensions

- Length: 6.50 in (16.51 cm)

Maker

Unknown

Description:

A Durham Ox Series pickle dish printed in blue with a portion of the Cowman pattern which includes just the cow and calf .

[BACK TO CATALOG INDEX](#)



Printing in a single color on earthenware and stoneware 1780-1820

[View All](#)



Animals

[View All](#)



Durham Ox - Maker Unknown

[View All](#)



Examples by Maker

[*View All*](#)



Print Type Indexd

[*View All*](#)