

[View PDF](#)

Underglaze

Printing in a single color on earthenware and stoneware 1820-1850, printed and painted

[Add to My Gallery](#) | [Create an Album](#)



Additional Image:



[enlarge](#) [+]

Shown here is the pattern printed under the spout of the jug.

Shape Type

Miscellaneous

Pattern Type

Literature, Classical, Mythology, and the Arts

Date

1830-1840

Dimensions

- Height: 5.50 in (13.97 cm)

Maker

Unknown

Description:

An earthenware copper luster jug with an Adam Buck inspired print of the well-known Battledore and Shuttlecock pattern. A second Buck type pattern, that of a mother and child, is printed under the spout. Both patterns are printed and painted over the glaze.

[BACK TO CATALOG INDEX](#)



Printing in a single color on earthenware and stoneware 1820-1850

[View All](#)



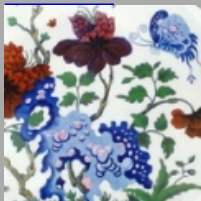
Literature, Classical, Mythology, and the Arts

[View All](#)



Examples by Maker

[View All](#)



Printed & Painted

[View All](#)



Print Type Indexd

[View All](#)