

[View PDF](#)

Overglaze

Printing on Earthenware and Stoneware 1750-1800, printed and painted

[Add to My Gallery](#) | [Create an Album](#)



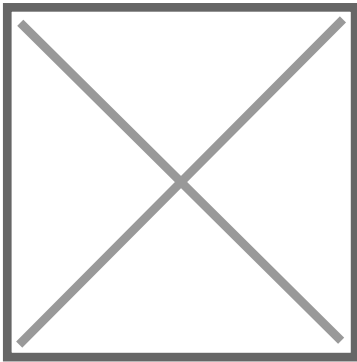
National Museums Liverpool

Pattern



[enlarge](#) [+]

Source



[enlarge](#) [+]

Source Description:

The design was copied from a relief tablet made by Wedgwood and Bentley, listed as no.69 "The Judgement of Hercules" in their 1773 Catalogue of Ornamental Ware. At that date the tablet will have been in black basalt, but in 1778 they began making it in jasper. The tile includes

[expand](#) [+]

Shape Type

Miscellaneous

Pattern Type

Literature, Classical, Mythology, and the Arts

Date

1773-1790

Dimensions

- Height: 12.70 in (32.26 cm)
- Length: 12.70 in (32.26 cm)
- Width: 0.70 in (1.78 cm)

Maker

Unknown

Printer's Name

Guy Green

Description:

Tin-glazed earthenware (so-called delftware) tile printed in black and painted in green by Guy Green, Liverpool, with "The Judgement of Hercules" (Anthony Ray, Liverpool Printed Tiles, 1994, no. E1-1). Hercules chooses between Virtue, who points to an arduous upward path, and Pleasure, who suggests he relax with her. It is one of a series of tiles with neoclassical subjects (either figures or vases), all

[expand](#) [+]

[BACK TO CATALOG INDEX](#)



Printing on Earthenware and Stoneware 1750-1800

[View All](#)



Literature, Classical, Mythology, and the Arts

[View All](#)



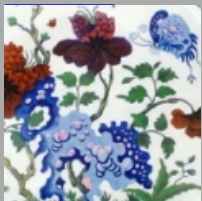
Examples by Maker

[View All](#)



Examples by Printer

[View All](#)



Printed & Painted

[View All](#)



Print Type Index

[View All](#)