

[View PDF](#)

Overglaze

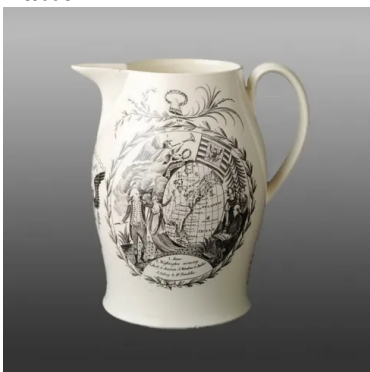
Printing on Earthenware and Stoneware 1800-1900

[Add to My Gallery](#) | [Create an Album](#)



S. Robert Teitelman Collection at Winterthur

Pattern



[enlarge](#) [+]

Source



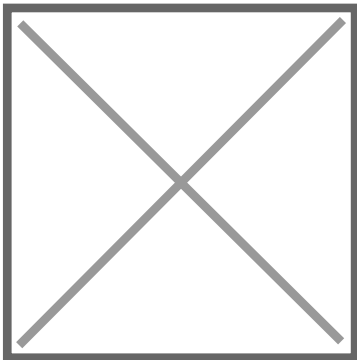
[enlarge](#) [\[+\]](#)

Source Description:

A large map of the United States of America published by John Wallis of London, the first edition dated April 3, 1783. Wallis's "Map-Warehouse" was in business from about 1780 to 1815, and other versions of his American map are known. Printed in London shortly after the signing of the

[expand](#) [\[+\]](#)

Additional Image:



[enlarge](#) [\[+\]](#)

The reverse is printed with an oval frame based on the chain of states design, and includes Kentucky the fifteenth state which entered the Union on June 1, 1792. The central design is entitled Washington crown'd with Laurels by Liberty and depicts Liberty as a classical female carrying the liberty cap on her staff, she sits above a horn of plenty and to the side of an American flag. Liberty holds a crown of laurels above a laurel-framed profile portrait of George Washington honoring Washington for his valor and lamenting his death. Above the whole scene hovers the eagle of the Great Seal of the United States. The small Washington portrait ultimately derives from an etching by George Wright published about 1780, considered among the most the influential of Washington portraits it was copied by many American and British engravers one of who would have been the source for the pottery engraver who produced this design.

Shape Type

Miscellaneous

Pattern Type

Commemorative, Heraldic and Historical Events

Date

1800-1810

Dimensions

- Height: 8.00 in (20.32 cm)

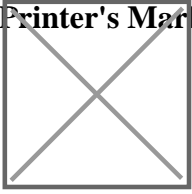
Maker

Unknown

Printer's Name

Francis Morris

Printer's Mark:



[enlarge](#) [+]

Description:

Creamware jug, printed in black with an image based on a large map of the United States of America published by John Wallis of London, the first edition dated April 3, 1783. In this adaptation, the cartouche from the lower right corner of the map is enlarged and becomes the pictorial frame for the map of the Eastern Seaboard of North America. To the

[expand](#) [+]

[BACK TO CATALOG INDEX](#)



Printing on Earthenware and Stoneware 1800-1900

[View All](#)



Commemorative, Heraldic and Historical Events

[View All](#)



Examples by Maker

[View All](#)



Examples by Printer

[*View All*](#)



Print Type Indexd

[*View All*](#)