

[View PDF](#)

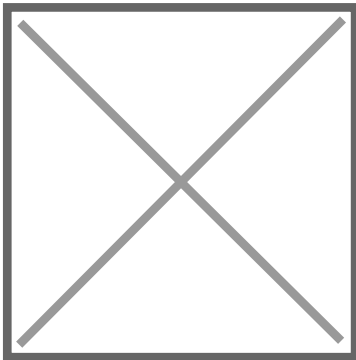
Underglaze

Printing in a single color on earthenware and stoneware 1780-1820, printed and painted

[Add to My Gallery](#) | [Create an Album](#)



**Additional Image:**



[enlarge](#) [+]

View of the flat back side of the pot. It is unusual for the back side of bough pots to be printed. In this case, Spode has added the additional printed Standard Willow pattern.

Shape Type

Miscellaneous

Pattern Type

Chinese, Asian and Other Exotic Themes

Date

1800-1810

Dimensions

- Height: 5.75 in (14.61 cm)
- Length: 7.00 in (17.78 cm)
- Width: 4.00 in (10.16 cm)

Maker

Spode

**Description:**

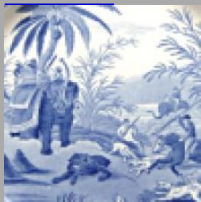
A demilune shaped pearlware bough pot printed underglaze in blue with the Standard Willow pattern. The decorative molded base is highlighted with hand painted blue lines. The pattern is also printed on the back side (see below). Although it is not marked, it can be attributed to Spode based on the shape which matches other marked examples.

[BACK TO CATALOG INDEX](#)



Printing in a single color on earthenware and stoneware 1780-1820

[View All](#)



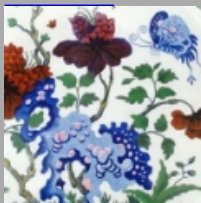
Chinese, Asian and Other Exotic Themes

[View All](#)



Examples by Maker

[View All](#)



Printed & Painted

[View All](#)



Print Type Indexd

[View All](#)