

[View PDF](#)

Underglaze

Printing in a single color on earthenware and stoneware 1850-1900, printed and painted

[Add to My Gallery](#) | [Create an Album](#)



Additional Image:



[enlarge](#) [+]

Shown here is the underside of the tray. It was printed in dark blue or bluish black with a marble-like pattern. A rather unusual treatment for the underside of a tray.



[enlarge](#) [+]

Shown here is a view of the side of the tray revealing how the marble-like printed pattern extends up the sides.

Shape Type

Dinner & Dessert Wares

Pattern Type

Chinese, Asian and Other Exotic Themes

Date

1866-1872

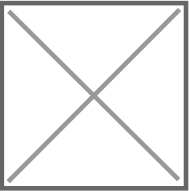
Dimensions

- Length: 11.75 in (29.85 cm)
- Width: 8.25 in (20.96 cm)

Maker

Davenport

Maker's Mark:



Printed

[enlarge](#) [+]

Maker's Mark:



Impressed

[enlarge](#) [+]

Description:

An earthenware rectangular tray with molded edge printed in black with a chinoiserie scene. The pattern has been assigned the name Gardeners and Shed in the TCC Pattern and Source Print Database. Floral sprays were added around the center pattern. The printed outline of the pattern was enameled or painted and black matte finished. The molded edge is enameled in red. 1866 is believed

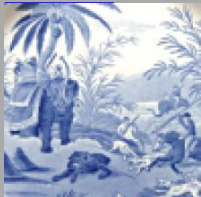
expand [+]

BACK TO CATALOG INDEX



Printing in a single color on earthenware and stoneware 1850-1900

[View All](#)



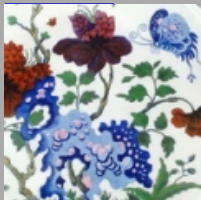
Chinese, Asian and Other Exotic Themes

[View All](#)



Examples by Maker

[View All](#)



Printed & Painted

[View All](#)



Print Type Indexd

[View All](#)